



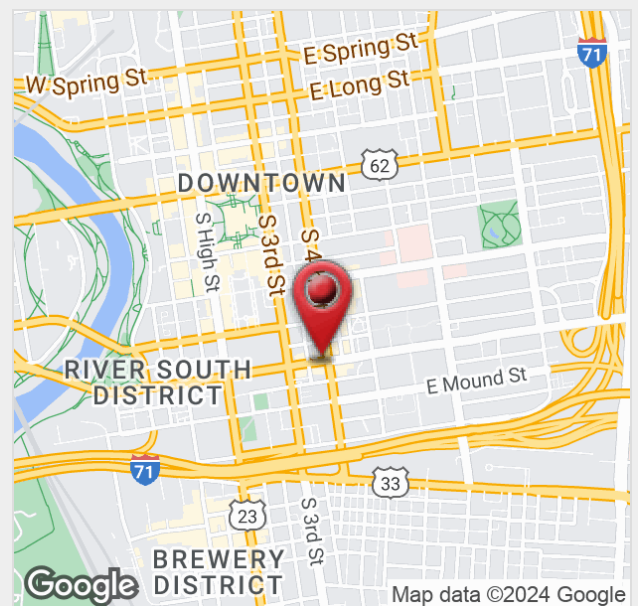
147-153 E. Main Street

147-153 E. Main Street, Columbus, Ohio 43215

Property Features

- Prime Downtown Columbus Location
- ±3,256 SF Creative Loft Space
- Exposed Brick, Hardwood Floors & 13 ft Ceilings
- Large Windows Providing Abundant Natural Light
- Kitchen / Lounge Area
- In-Suite Restroom
- Access to Passenger & Freight Elevator
- High Visibility Corner w/ Building Signage Available
- Street Parking & Parking Lots Nearby
- Easy Access to Highways
- Numerous Amenities Nearby including Restaurants, Hotels, Columbus Commons, and Bicentennial Park

Lease Rate: \$22.00 SF/Yr (Full Service)



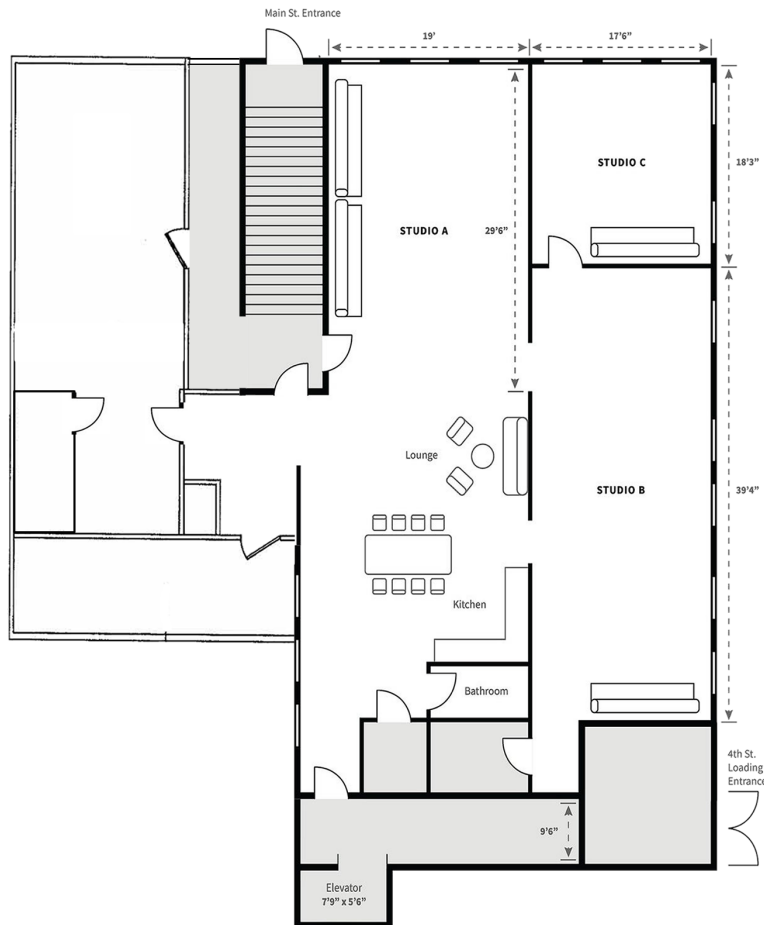
For more information:

Peter Merkle

614 629 5240 • pmerkle@ohioequities.com

Philip Bird, SIOR

614 629 5296 • pbird@ohioequities.com



SPACE	SPACE USE	LEASE RATE	LEASE TYPE	SIZE (SF)	AVAILABILITY
Suite 200	Creative/Loft	\$22.00 SF/YR	Full Service	3,256 SF	NOW

